

1 1ST FLOOR  
1/8" = 1'-0" (7.51' NAVD)

1 PROPOSED FIRST FLOOR REFLECTED CEILING PLAN

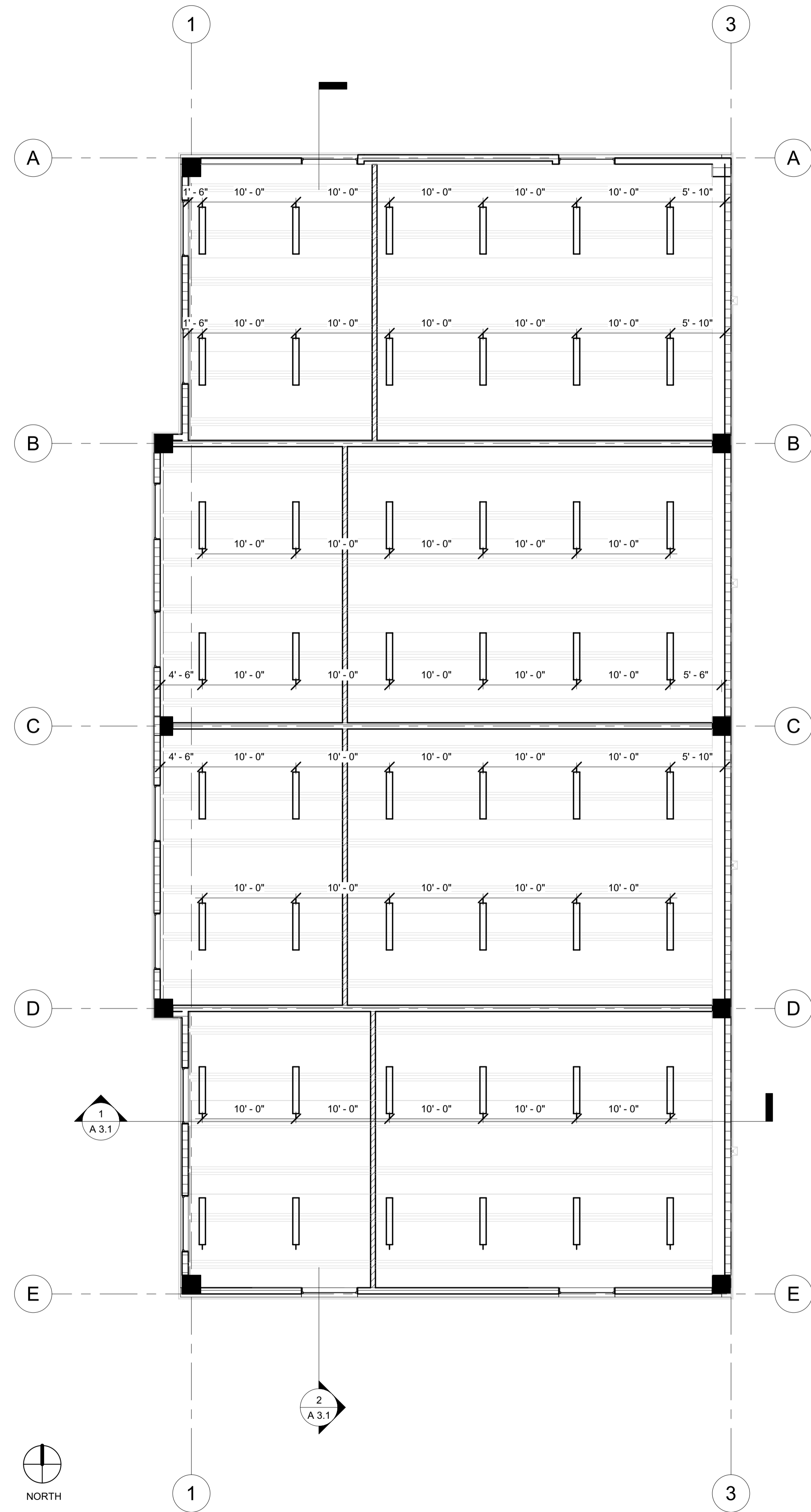
## ELECTRICAL SYMBOLS

	-DUPLEX RECEPTACLE 15 AMP/120 VOLT	-MOUNT 12" A.F.F. UNLESS OTHERWISE NOTED
	-DUPLEX RECEPTACLE 15 AMP/120 VOLT	-VERIFY MOUNTING HEIGHT
	-G.F.I. RECEPTACLE 15 AMP/120 VOLT	-VERIFY MOUNTING HEIGHT
	-QUAD RECEPTACLE 15 AMP/120 VOLT	-MOUNT 12" A.F.F. UNLESS OTHERWISE NOTED
	-SINGLE RECEPTACLE 20 AMP/120 VOLT	-VERIFY MOUNTING HEIGHT
	-EQUIPMENT RECEPTACLE	-MOUNT 18" A.F.F. UNLESS OTHERWISE NOTED VOLTAGE AND AMPACITY AS PER PLANS
	-15 AMP/120 VOLT	-MOUNT 44" A.F.F. UNLESS OTHERWISE NOTED
	-SWITCH, THREE-WAY 15 AMP/120 VOLT	-MOUNT 44" A.F.F. UNLESS OTHERWISE NOTED
	-SWITCH, MOTOR RATED 15 AMP/120 VOLT	-RATED FOR USE WITH TOTAL MOTOR LOADS
	-SWITCH, FAN DIMMER 120 VOLT RHEOSTAT	-SIZE DIMMER WITH TOTAL MOTOR LOAD
	-DOOR JAMB LIGHT SWITCH	-VERIFY EXACT MOUNTING HEIGHT, DOOR SWING AND LOCATION
	-TELEPHONE OUTLET	
	-DATA/PHONE OUTLET	
	-TELEVISION OUTLET	
	-D.S.S. SATELLITE OUTLET	
	-KEYPAD, LOW VOLTAGE CONTROL	
	-DISCONNECT	-SIZED AND FUSED AS PER EQUIPMENT NAME PLATE RATING
	-SMOKE DETECTOR	-CONNECT TO BATHROOM LIGHTING CIRCUIT

	-DOOR CHIME
	-RECESSED LIGHT FIXTURE
	-SURFACE MOUNTED CEILING FIXTURE
	-TRACK LIGHT, LENGTH TO SCALE WITH PLANS
	-FLOURESCENT FIXTURE, LENGTH TO SCALE WITH PLANS
	-PENDANT MOUNTED FIXTURE, PROVIDE BRACING
	-WALL MOUNTED FIXTURE
	-LANDSCAPE LIGHTS
	-OUTDOOR FLOOD LIGHTS, 100 WATT PAR38 LAMPS
	-MOTOR / FAN
	-CEILING FAN
	-DOORBELL
	-EXIT SIGN WITH EMERGENCY LIGHT ABOVE EXIST DOOR TO REMAIN.
	-ACOUSTICAL CEILING GRID & TILE.
	-DENOTES NEW DRYWALL CEILING.
	-LIGHT FIXTURE PER BANK STANDARD
	-DENOTES FLOOR OR ROOF MOUNT
	-DENOTES CEILING MOUNT
	LOW VOLTAGE ZONE DESIGNATION AT LUTRON SYSTEM PANEL

3 ELECTRICAL SYMBOLS

2 PROPOSED SECOND FLOOR REFLECTED CEILING PLAN

2 2ND FLOOR PLAN (+10'-8")  
1/8" = 1'-0"

LLR Architects, Inc.  
ARCHITECTURE & PLANNING  
9000 SHERIDAN STREET ST. 158  
PEMBROKE PINES, FL 33024  
(OFF.) - 305-403-7926  
(CELL) - 786-543-0851  
E-MAIL: LUAROSA@LLRARCHITECTS.COM  
Luis La Rosa -Registered Architect  
Architect No. 0017852  
FL 00000000

## Revision

REV	DATE	BY
-----	------	----

PROPOSED WAREHOUSE FOR:  
REGANZANI GROUP LLC  
VACANT PROPERTY, SW 3RD STREET,  
POMPANO BEACH, FL, 33069

SEAL: AR 0117852  
Luis La Rosa

Digitally signed by Luis La Rosa.  
Date: 2024.05.29 17:39:14 -04'00'

100% CONSTRUCTION DOCUMENTS

DRAWN:	Author
CHECKED:	Checker
DATE:	11/07/2023
SCALE:	AS NOTED
JOB. NO.:	023-042
SHEET:	
OF:	
SHEETS:	

A 1.4

1/8" = 1'-0"

5/29/2024 3:35:44 PM